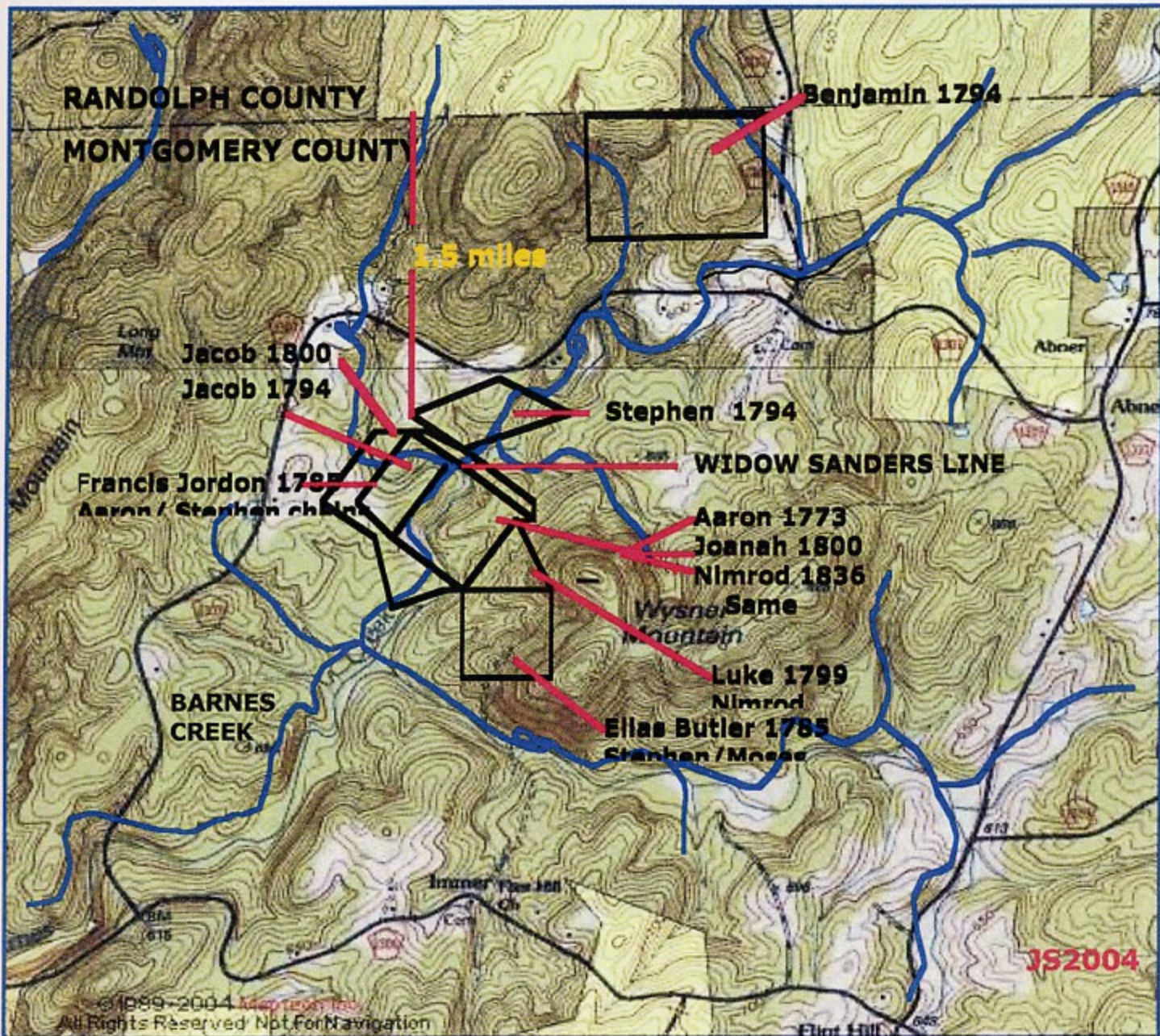


Sanders Family of Montgomery County, North Carolina, 1765-1810

Maps prepared by Jim Sanders, Ojai, California.

1772-1810

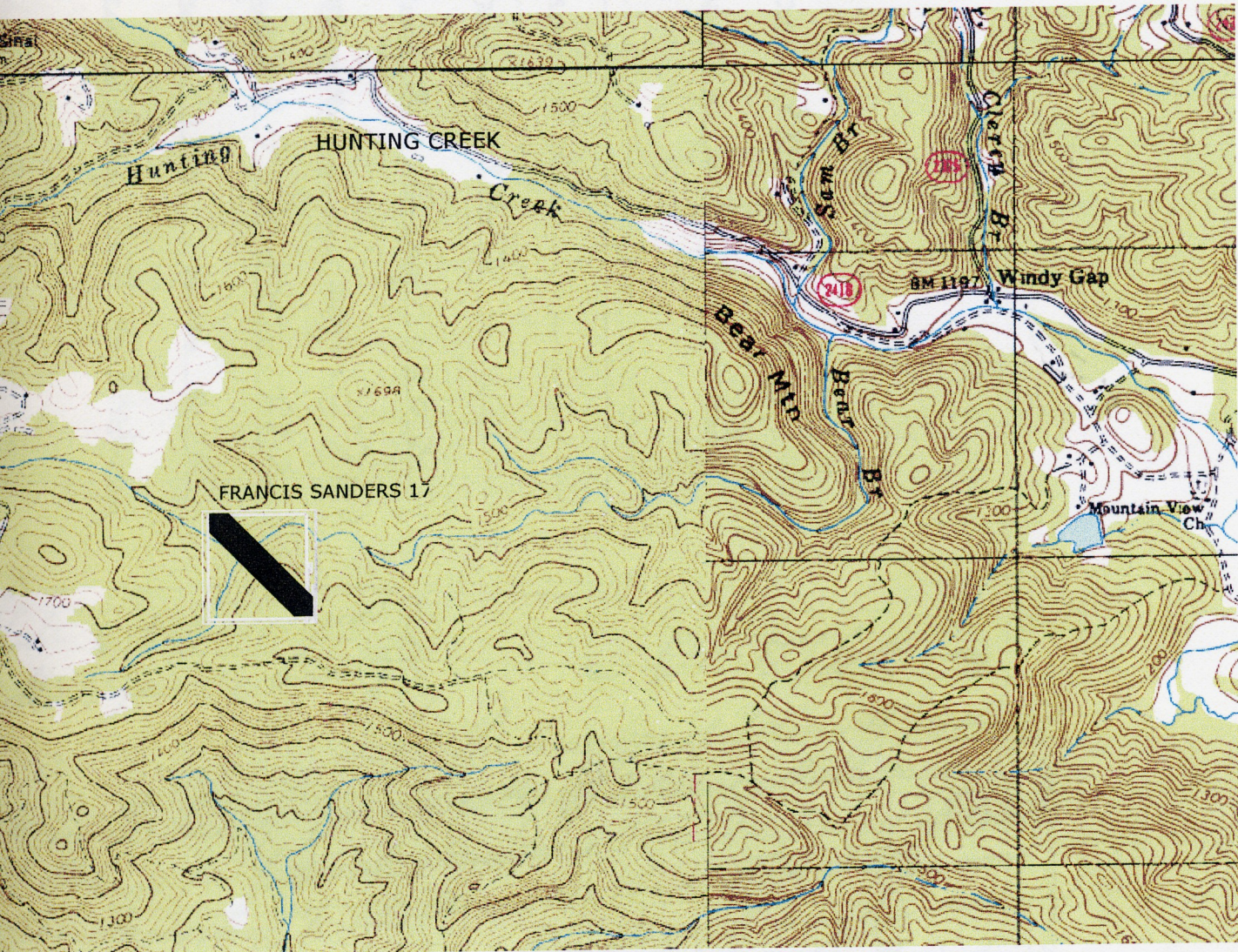
BARNES CREEK MONTGOMERY COUNTY NC SANDERS PROPERTY



Approximate Locations of Sanders properties not to scale Jim Sanders 2004

Barnes Creek and Branches thereof are shaded in blue. Reedy, Abners and the Dark fork have not been identified

FRANCIS SANDERS BEAR BRANCH HUNTING CREEK 1778



FRANCIS' PROPERTY IS ABOUT 8 MILES NW OF YADKIN, IREDELL
AND WILKES COUNTIES COMMON CORNER. Jim Sanders 11/04/04

NATIONAL FOREST

APPROXIMATE LOCATION ARROW SANDERS 1775 #1093
McLANES Creek 250 Acres . 1.5 miles point to point

#1093 11 MAR. 1775

YADKIN River 2 miles

BADIN QUAD

McLANES
Creek

Creek

CHARRY RIVER

Boundary

1.5 to Charry

337
Gaging Sta

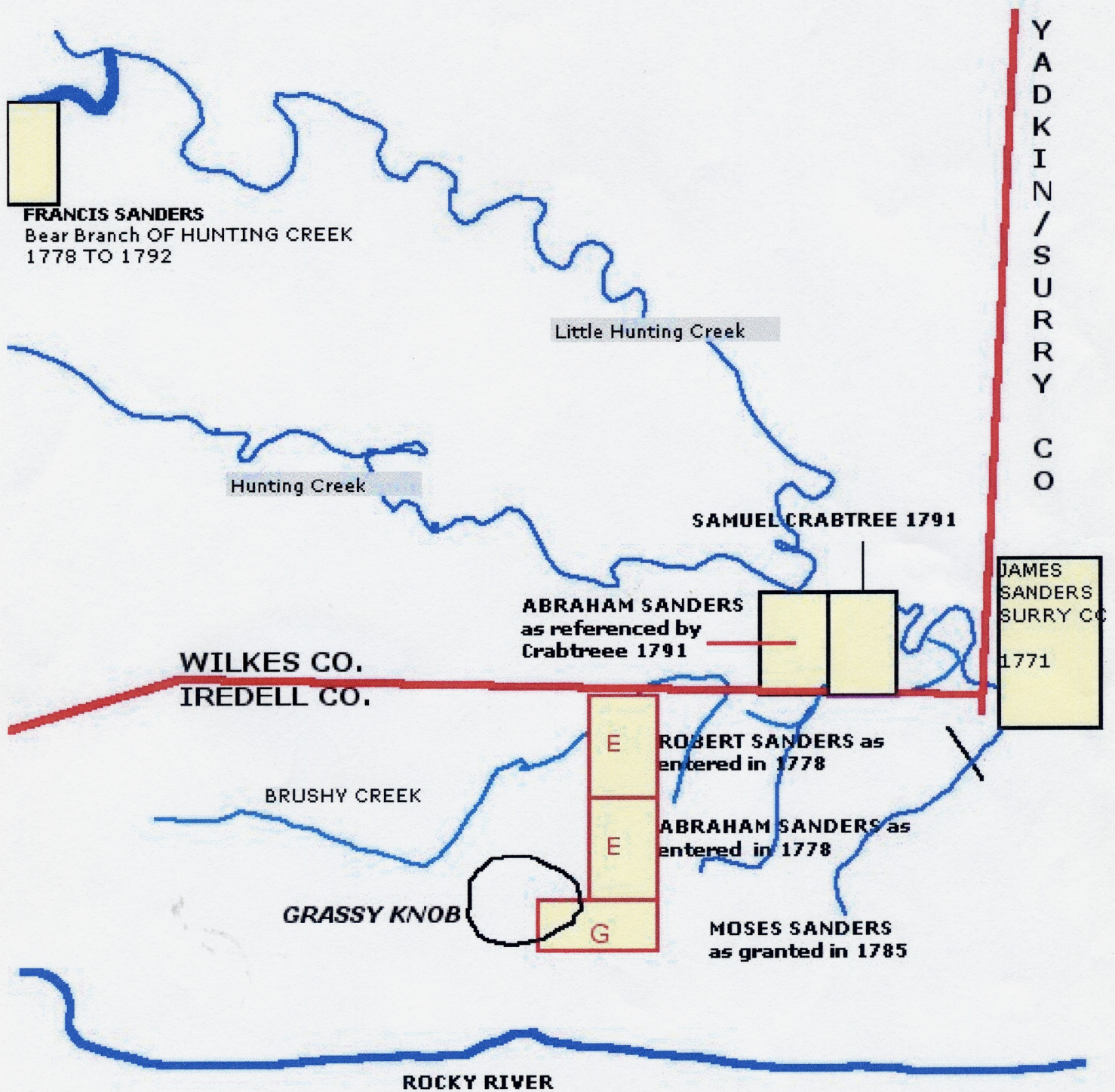
1153

N
S

Yocassin



**PLAT MAP 1
THE GRASSY KNOB SANDERS AS DESCRIBED IN LAND
ENTRIES AND GRANTS.**



SCALE APPROXIMATELY 1"=1MILE

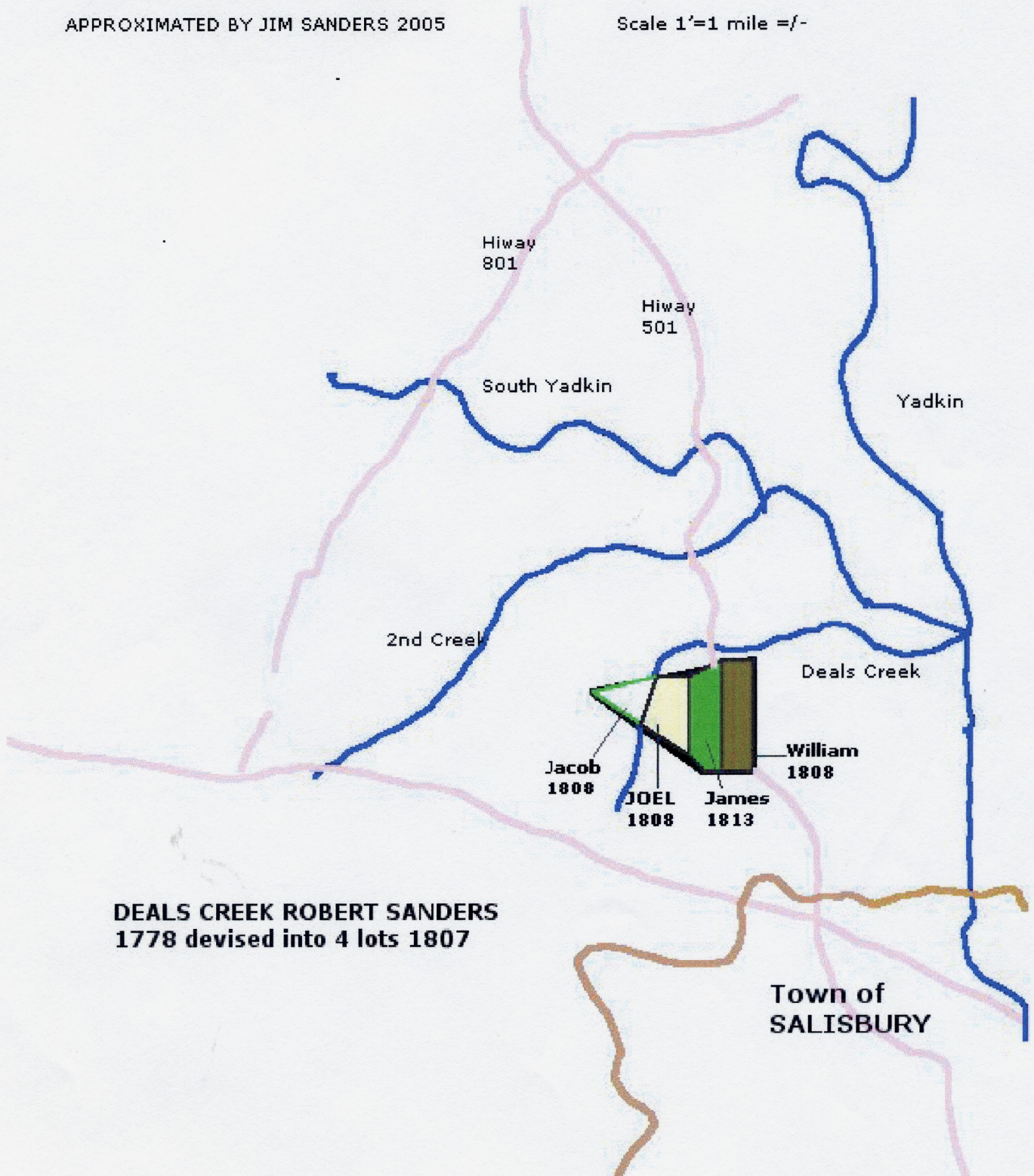
approximated by Jim Sanders 2005

PLAT MAP 2

DEALS CREEK SANDERS ENTERED 217 ACRES 1778. GRANTED TO ROBERT SANDERS 1798. DEVISED TO HIS HEIRS 1807, INTO 4 SEPARATE PARCELS SOLD BY HIS HEIRS 1808-1813 AS SHOWN BY SUBDIVISION LINES.

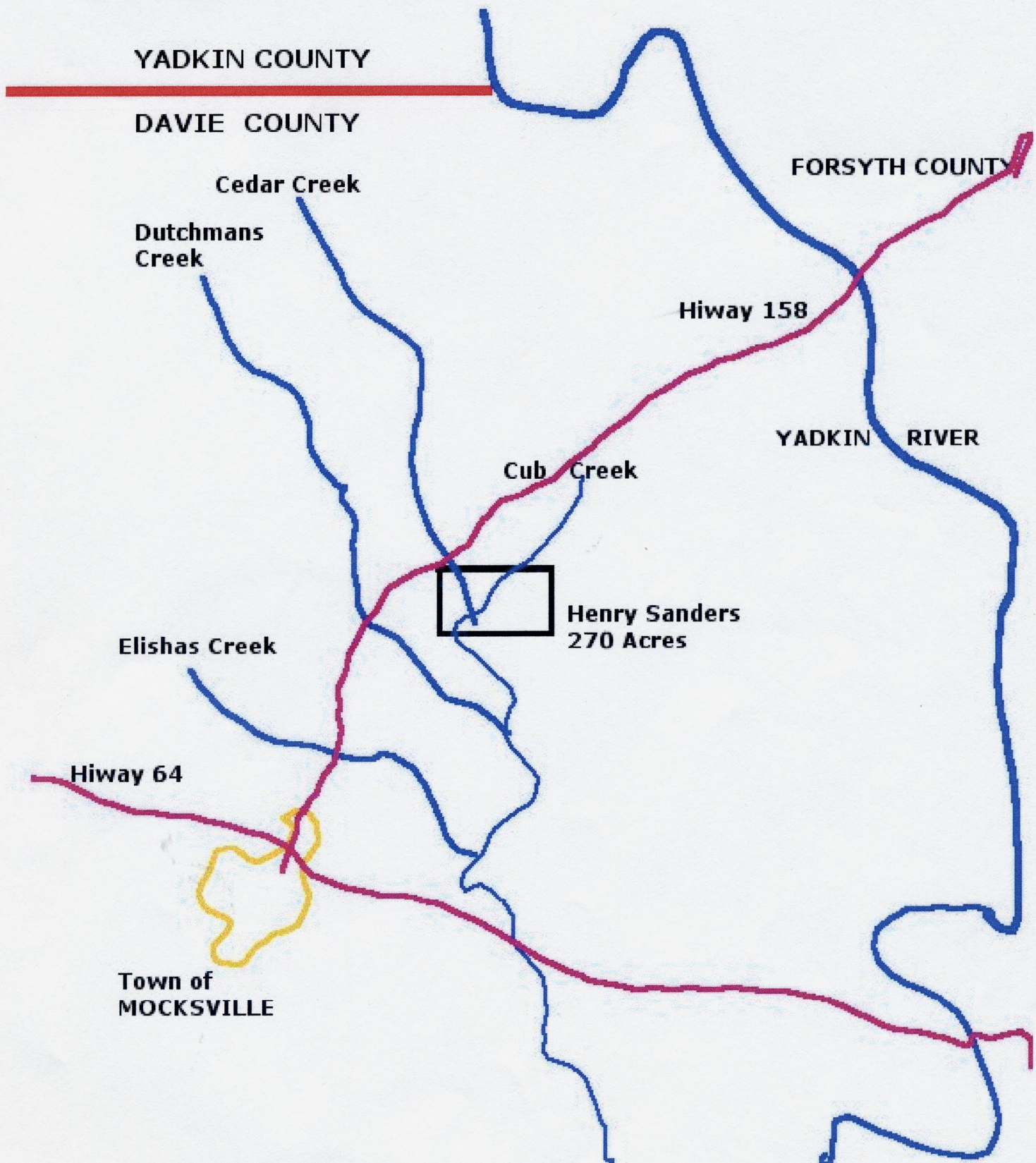
APPROXIMATED BY JIM SANDERS 2005

Scale 1"=1 mile +/-



**PLAT MAP 3
Cub Creek Henry Sanders 270 Acres 1801**

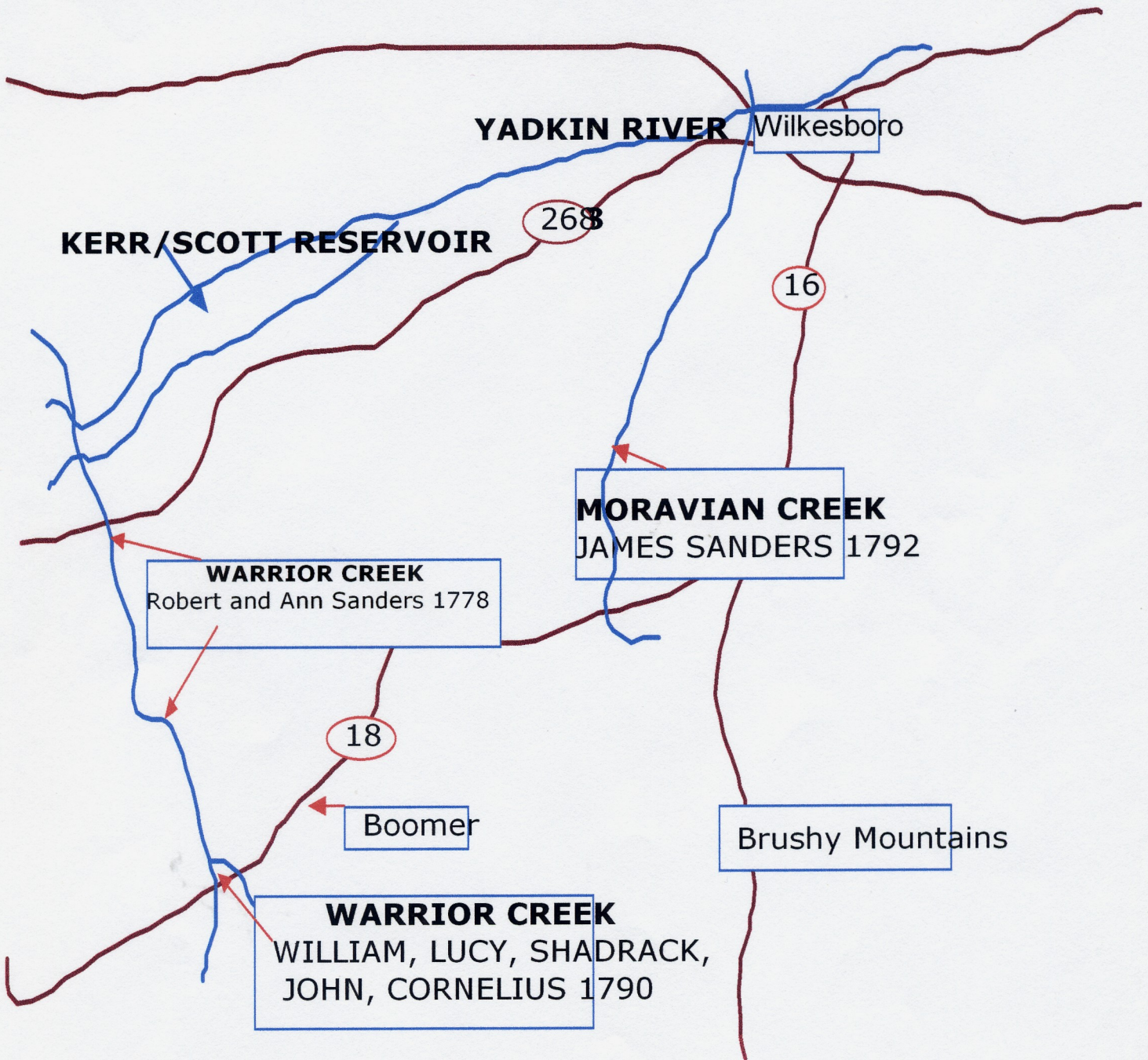
Approximated by Jim Sanders 2005.



PLAT MAP 4

Warrior Creek Robert Sanders 1778-1790; William Sanders fa James Sanders 1792.

Approximated by Jim Sanders 2005



PLAT MAP 5

PANTHER CREEK AND CABBIN CREEK

